



## 30 TORRINGTON PLACE LONDON, E1W 2UY

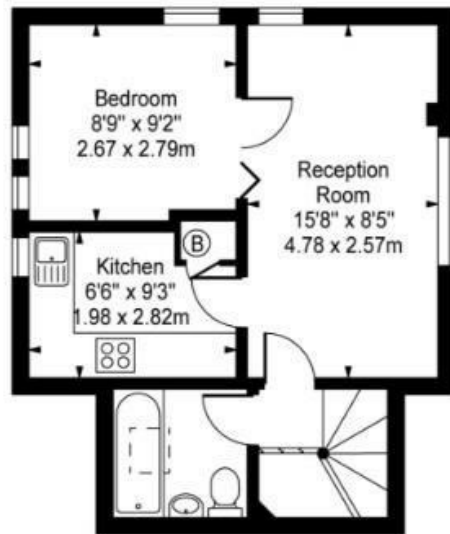
**£1,550 PCM**

This one bedroom property is located in West Wapping and is offered to the market UNFURNISHED. This unique property has its own private entrance and front door and is stylistically a one bedroom house. The property has its own separate kitchen area and a modern bathroom, making it perfect for a single renter or a couple.

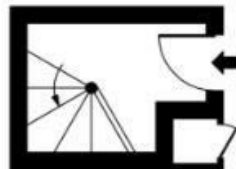
Torrington Place is located in West Wapping and is a short walk from Tower Hill Underground and DLR Stations which both offer good links to The City and Canary Wharf, as well as just 0.4 miles to Wapping station, with great connections through East & South London.

**DouglasPryce**

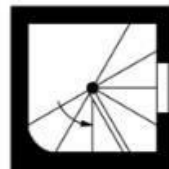
Torridon Place, E1W  
Approx. Gross Internal Area 438 Sq Ft - 40.69 Sq M



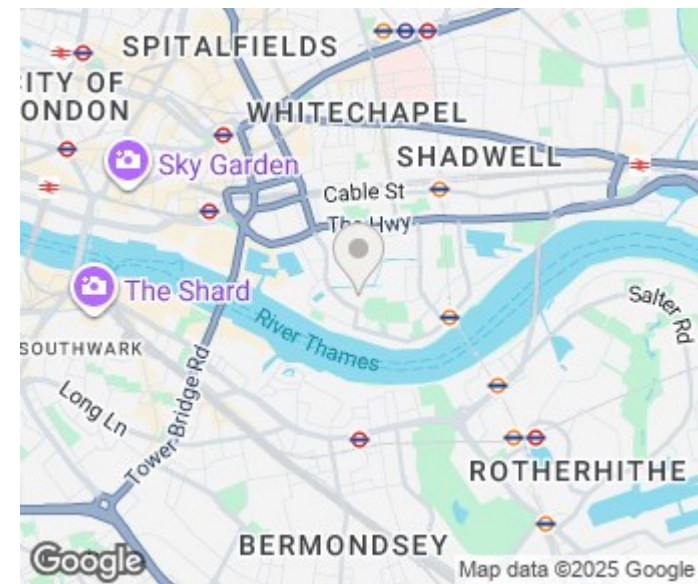
Second Floor



Ground Floor



First Floor



Energy Efficiency Rating		
	Current	Potential
Very energy efficient - lower running costs		
(92 plus) A		
(81-91) B		
(69-80) C		
(55-68) D	65	75
(39-54) E		
(21-38) F		
(1-20) G		
Not energy efficient - higher running costs		
England & Wales	EU Directive 2002/91/EC	

Agents Note: Whilst every care has been taken to prepare these particulars, they are for guidance purposes only. All measurements are approximate and are for general guidance purposes only and whilst every care has been taken to ensure their accuracy, they should not be relied upon and potential buyers/tenants are advised to recheck the measurements

Lettings  
Verdant Lane  
London  
SE6 1LF

07887933642  
glenn@douglaspryce.co.uk  
www.douglaspryce.co.uk

**DouglasPryce**